



75 HIGH HOLBORN

LONDON WC1

From 3,444 to 6,916 sq ft of new contemporary
Cat A and fitted office space



SPACE TO IMPRESS

75 High Holborn has been comprehensively refurbished to provide 3,444 to 6,916 sq ft of new contemporary Cat A and fitted office space with new showers, lockers and bike rack facilities.

With four floors now let, just two floors remain available. The available accommodation comprises fully fitted space on the 3rd floor and Cat A space on the 4th floor. The fitted floor benefits from meeting rooms, a fully fitted kitchen, fully exposed services, high ceilings & excellent levels of natural light.

The building reception has also been remodelled to provide a high-quality arrival experience - and is manned throughout the day.



Reception



3rd floor fit-out



3rd floor fit-out



SPECIFICATION



Comprehensive refurbishment



Fitted space



Manned reception



Remodelled reception



Cat A space



Fibre building backbone



Refurbished WC's



New exposed services



2 x new passenger lifts



New LED lighting throughout



4 x new showers, 24 x lockers and 16 x bike racks



3rd floor fit-out



Exposed services



3rd floor fit-out



AVAILABILITY

FLOOR	SQ FT	SQ M	CONDITION	AVAILABILITY
6th				Let
5th				Let
4th	3,472	323	CAT A	Available
3rd	3,444	320	Fitted	Available
2nd				Let
1st				Let
TOTAL	6,916	643		



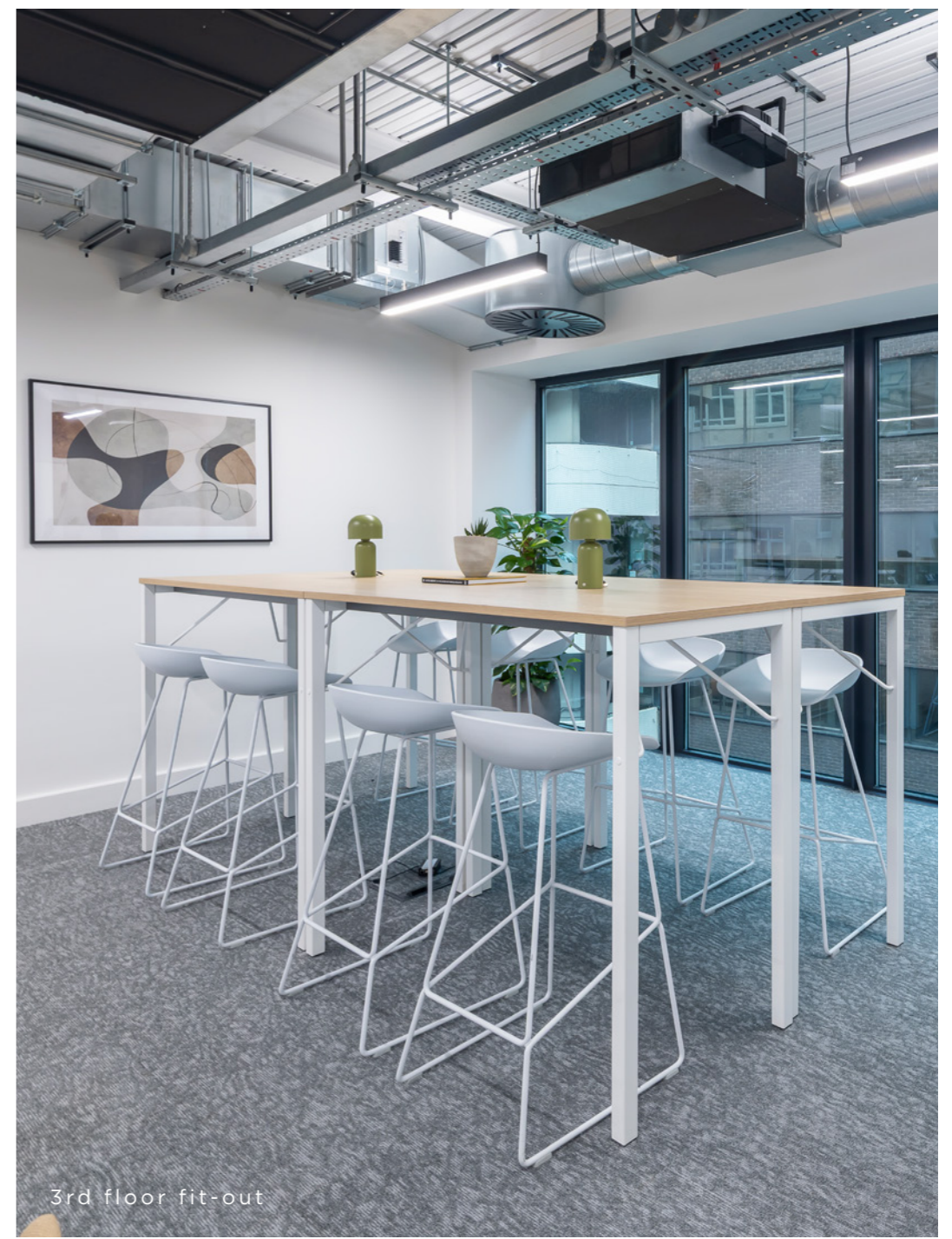
3rd floor fit-out



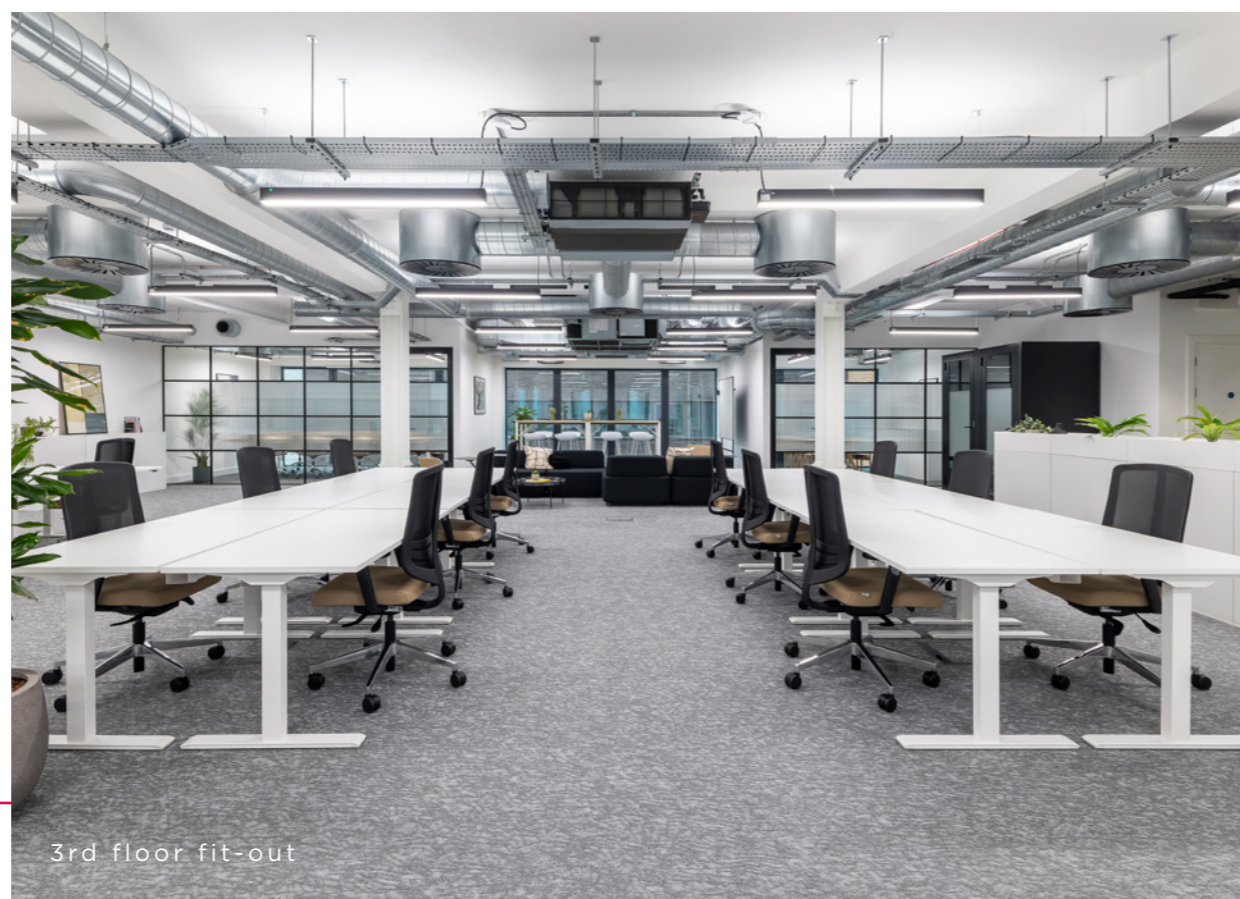
4th floor CAT A



3rd floor fit-out



3rd floor fit-out



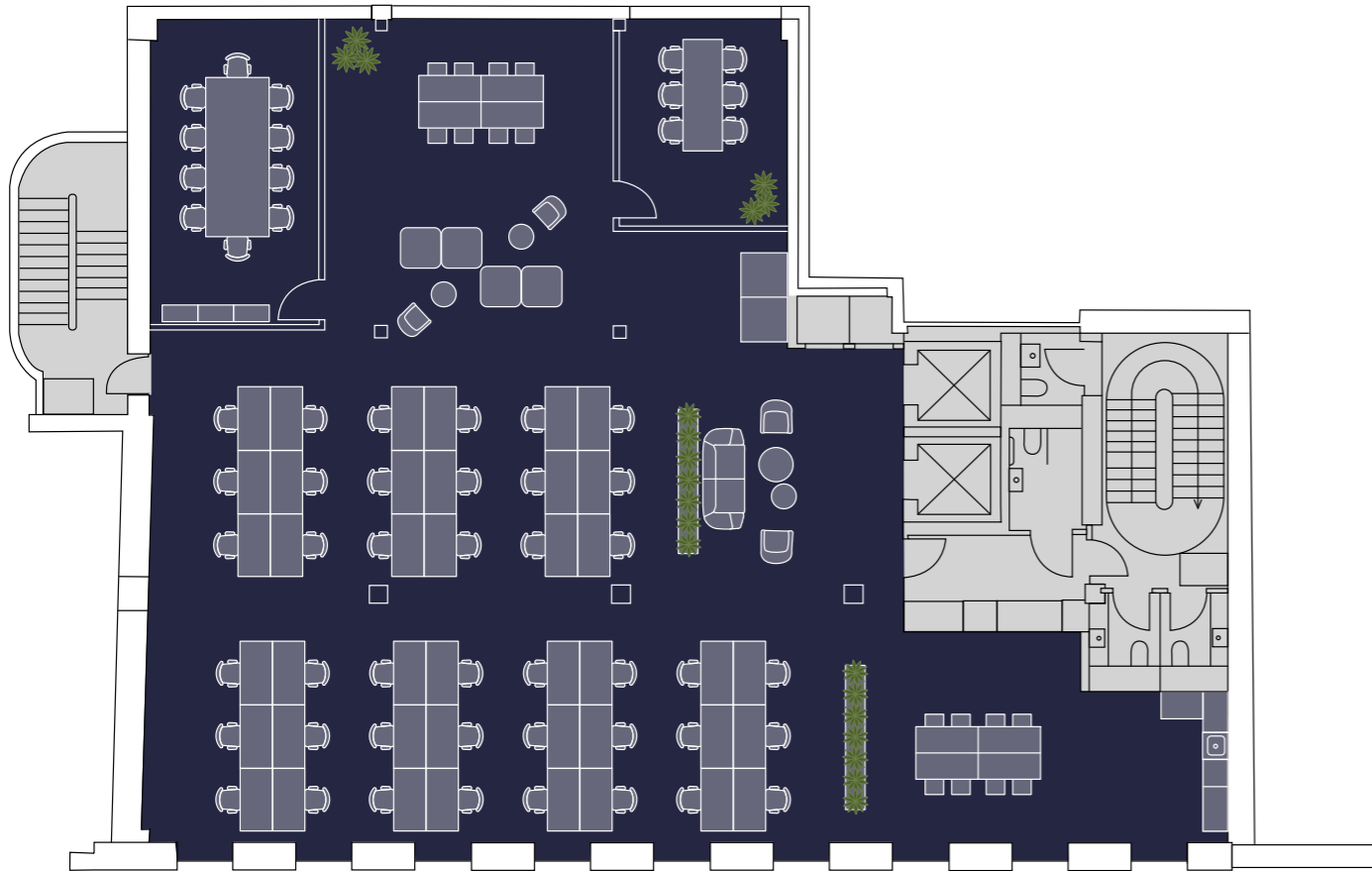
3rd floor fit-out



3RD FLOOR FIT-OUT

3,444 SQ FT
320 SQ M

- 42 x Desks
- 1 x 10 Person meeting room
- 1 x 6 Person meeting room
- 1 x Kitchenette
- 4 x Breakout areas
- 2 x Pods

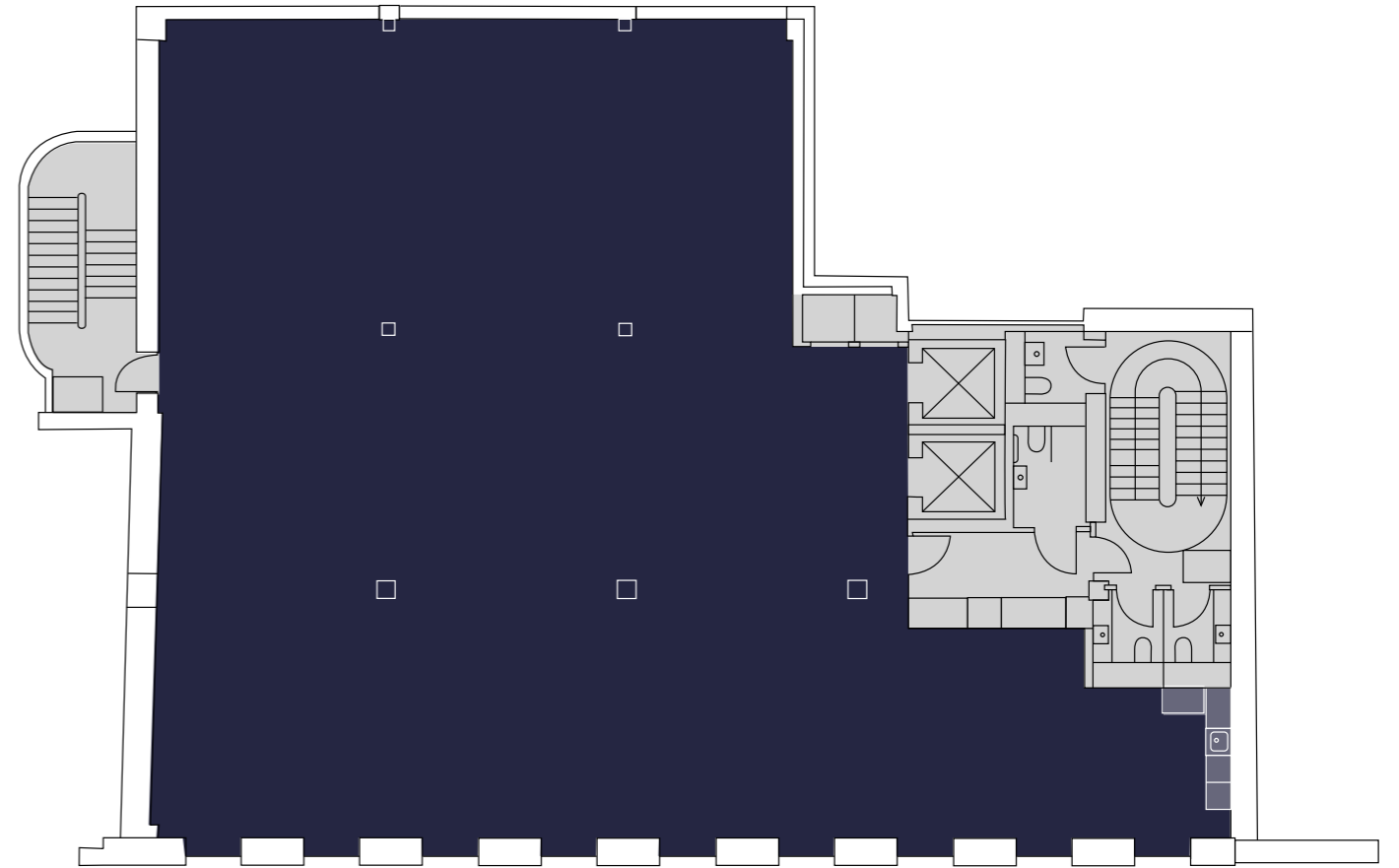


HIGH HOLBORN



4TH FLOOR

3,472 SQ FT
323 SQ M



HIGH HOLBORN



READY TO EXPLORE

With its prominent position on High Holborn, the building is situated in London's centre. There are fantastic retail, restaurant and luxury hotel opportunities as well as the popular Lamb's Conduit Street and Leather Lane Market all interspersed with peaceful green spaces.

It is well connected to both the City and West End with superb transport links including Underground, National Rail and Elizabeth Line stations all moments away.



Gray's Inn Gardens



New Street Square



Leather Lane Market



L'oscar





75 HIGH HOLBORN

CHANCERY LANE

HOLBORN

FARRINGDON

CITY THAMESLINK

QUEEN SQUARE GARDENS

Swan

Knockbox Coffee

Pure Gym

DoubleTree

NYX Hotel

BLOOMSBURY SQUARE GARDENS

L'oscar

The Holborn Dining Room

Rosewood Hotel

The Hoxton

Colonel Saab

1Rebel

LINCOLN'S INN FIELDS

Club Quarters Hotel

Bank

Coopers

The Seven Stars

Cigalon

Brasserie Blanc

Gaicho

The Old Bank of England

ROKA

The Delauney

Margot

Barrafina

The Lady Ottoline

La Fromagerie

Noble Rot

The Craft Beer Co

LEATHER LANE MARKET

The Salad Kitchen

Prufrock Coffee

Catalyst

Mugen

Bleeding Heart Bistro

Gymbox

Cittie of Yorke

Ye Olde Mitre

Vivat Bacchus

Black Sheep Coffee

The Gym Group

The Pregnant Man

Natural Kitchen

NEW STREET SQUARE

Olive + Squash

Ye Olde Cheshire Cheese

Clifford's

Ludgate Hill

Fleet Street

Lamb's Conduit St

Theobalds Road

Gray's Inn Road

Southampton Row

High Holborn

Holborn

Chancery Lane

Kingsway

Fetter Lane

Farringdon Street



CONTACT

Farebrother

MARK ANSTEY

manstey@farebrother.com

07841 684 901

HARVEY WIDDOWSON

hwiddowson@farebrother.com

07732 649 308

RUBIX

POPPY TAYLOR

poppy@rubix.london

07713 630 101

CHRIS COMMINS

chris@rubix.london

07904 131 351

Important notice relating to the Misrepresentation Act 1967 and the Property Misdescriptions Act 1991: (i) the particulars are set out as a general outline only for guidance of intending purchasers or lessees and do not constitute, nor constitute part of, an offer or contract (ii) all descriptions, dimensions, references to condition and necessary permission for use and occupation, and other details are given in good faith and are believed to be correct, but any intending purchasers or occupiers should not rely on them as statements or representations of fact, but must satisfy themselves by inspection or otherwise as to the correctness of each of them. March 2026.

Marketing: [Stuart Chapman Design](#)